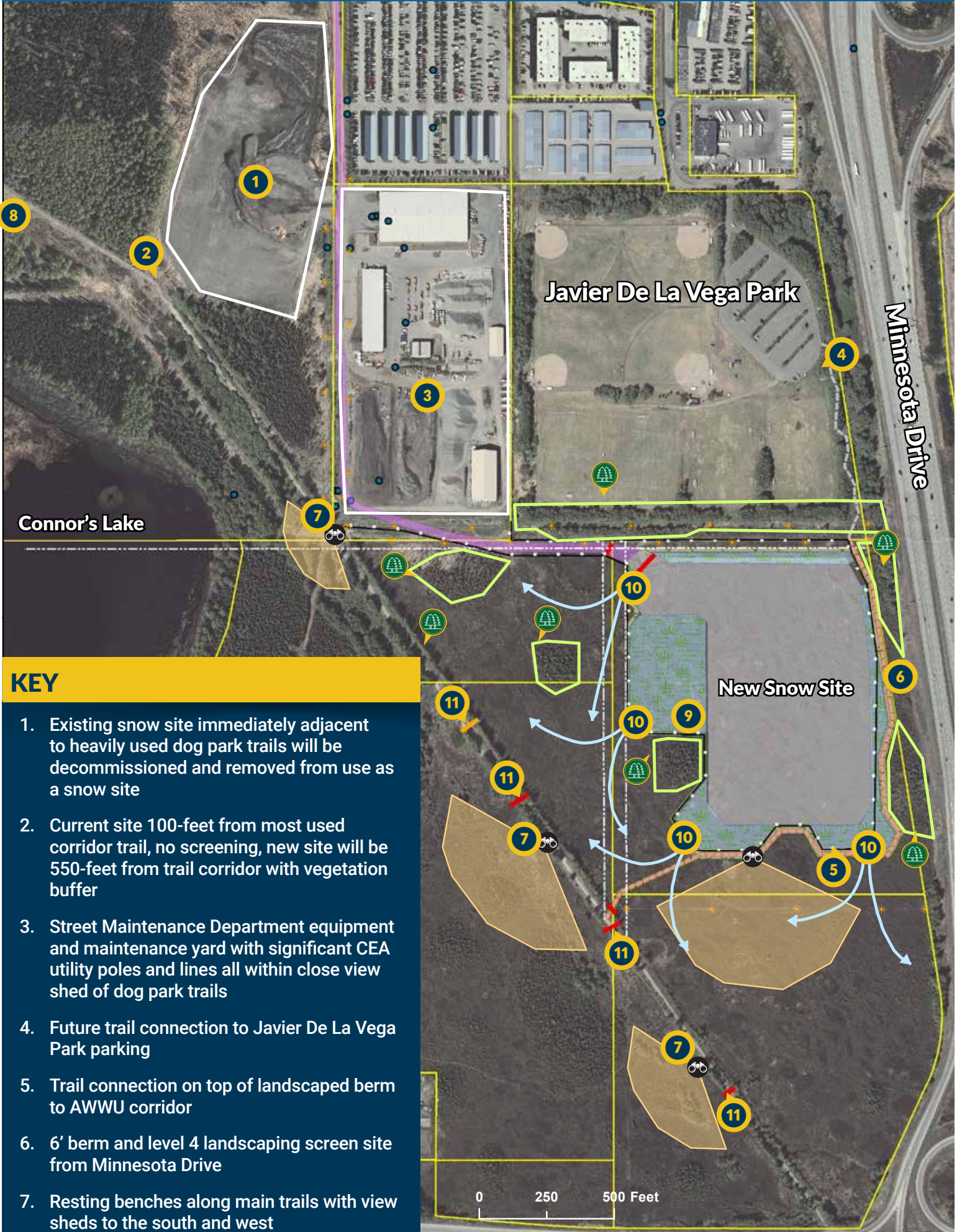




West Anchorage Snow Disposal Project

Project Management and Engineering No. 19-01

Snow Site Design Features



KEY

1. Existing snow site immediately adjacent to heavily used dog park trails will be decommissioned and removed from use as a snow site
2. Current site 100-feet from most used corridor trail, no screening, new site will be 550-feet from trail corridor with vegetation buffer
3. Street Maintenance Department equipment and maintenance yard with significant CEA utility poles and lines all within close view shed of dog park trails
4. Future trail connection to Javier De La Vega Park parking
5. Trail connection on top of landscaped berm to AWWU corridor
6. 6' berm and level 4 landscaping screen site from Minnesota Drive
7. Resting benches along main trails with view sheds to the south and west
8. Kiosks near trail heads describing trail system
9. Detention and settling areas to ensure clean meltwater discharge
10. Four outfall points to disperse meltwater widely into marsh
11. Four cross culverts to disperse meltwater into western areas of marsh



Indicates mature trees retained for site screening.



Indicates Utility Pole

QUESTIONS? CONTACT:



Email: info@westanchoragesnow.com



Web: www.westanchoragesnow.com