



# **West Anchorage Snow Disposal Project**

**Project Management and Engineering No. 19-01**

## **Phase Three Public Outreach Summary**

Municipality of Anchorage  
Anchorage, Alaska



## West Anchorage Snow Disposal Project Phase Three Public Outreach Summary

### Table of Contents

Introduction.....	1
Overview of Phase Three Public Involvement Activities .....	1
Info Kiosks.....	1
Virtual Public Meeting .....	3
Summary of Comments .....	3

### Attachments

Attachment A: September 10, 2021 Info Kiosk Photos  
Attachment B: Snow Site Design Features Handout  
Attachment C: Permitting and Design Handout  
Attachment D: October 12, 2021 Info Kiosk Photos  
Attachment E: Anchorage Daily News Advertisement – October 8, 2021  
Attachment F: Written Comments Submitted at the October Info Kiosk  
Attachment G: Virtual Public Meeting Presentation  
Attachment H: E-Blasts  
Attachment I: Flyers posted at the Connors Bog Dog Park  
Attachment J: Comment Log



## Introduction

This public outreach summary is used for tracking and documenting public involvement activities for Phase Three of the Municipality of Anchorage's (MOA's) West Anchorage Snow Disposal Project (Snow Disposal Project). It outlines the Phase Three public outreach strategies for the period beginning on September 10, 2021. The summary includes a description of the Phase Three public outreach activities, which include a virtual public meeting, two Informational Kiosks (Info Kiosks), the tools used for implementation, and the results of the completed public outreach during Phase Three.

## Overview of Phase Three Public Involvement Activities

The project team conducted a variety of public outreach approaches to engage and inform the public on the Snow Disposal Project. The events used in Phase Three are described below.

### Info Kiosks

On Friday, September 10, 2021, and Tuesday October 12, 2021, the Snow Disposal Project team hosted two Info Kiosks at the Jewel Lake Road parking area of the Connor's Bog Dog Park.

The purpose of the Info Kiosks was to inform the public of the Snow Disposal Project's permitting and design updates and receive public feedback.

#### September 10, 2021, Info Kiosk

Bill Spencer, Alice Rademacher, and Melinda Tsu staffed the Info Kiosk from 11:30AM to 1:30PM. Please see Attachment A for photos.

The project team members used the handouts listed below to update park visitors on the Snow Disposal Project.

- Snow Site Design Features Handout (Attachment B)
- Permitting & Design Phase One-pager (Attachment C)

A total of 20 people stopped at the info kiosk to converse with the project team. Overall, the sentiment was positive. Below are the main themes of the public's comments to the project team:

- Inquiry about who to speak to regarding dredging Connor's Lake.
- Comments about project support and inquiries about how to testify regarding their positive feedback at upcoming meetings and hearings.
- Clarification as to why the Northwood Site does not meet the current MOA needs for a snow disposal site.
- Questions on potential changes to or impacts on the local ecosystem (e.g., runoff to wetlands).
- Acknowledgment and awareness of the existing Northwood Snow Disposal site.



## West Anchorage Snow Disposal Project Phase Three Public Outreach Summary

### October 12, 2021, Info Kiosk

Bill Spencer and Alice Rademacher staffed an Info Kiosk from 3:30PM to 5:30PM. Please see Attachment D for photos.

To inform community members of the Info Kiosk, flyers were posted at the entrances to the Dog Park and a newspaper ad was published in the October 8, 2021, edition of the *Anchorage Daily News* (Attachment E).

The project team members used the handouts listed below to update park visitors on the Snow Disposal Project:

- Snow Site Design Features Handout (Attachment B)
- Permitting & Design Phase One-pager (Attachment C)

A total of 46 people stopped at the Info Kiosk to converse with the project team and submit comments. Overall, the sentiment was positive. Below are the main themes of the public's comments to the project team:

- Appreciation and happiness that the project team hosted the Info Kiosk and came to the project location to inform people of the project and deliver updates.
- Comments about project support and inquiries about how to testify regarding their positive feedback at upcoming meetings and hearings.
- Questions about potential changes to or impacts on the recreational snowshoe access during the winter months.

Roughly 75 percent of the Info Kiosk attendees verbally commented that they liked the idea of moving the snow disposal site or did not express opposition. Several attendees expressed a belief that the project is a good use of taxpayer money.

The following two written comments were submitted (Attachment F):

- "I think the proposed changes sound great!"
- "Put a fence around it to keep animals (fox & moose) out."





## West Anchorage Snow Disposal Project Phase Three Public Outreach Summary

### Virtual Public Meeting

On Tuesday, November 9, 2021, the Snow Disposal Project team hosted an online, interactive Virtual Public Meeting. The public meeting consisted of a virtual presentation (Attachment G) followed by a live question-and-answer session.

The presentation outlined project information and the details of the Draft Design Study Report (DSR). The presentation was narrated by Bill Spencer, HDR Project Manager and lead engineer.

The purpose of the Virtual Public Meeting was to update attendees on the Snow Disposal Project's permitting status and design process, and to receive feedback on the DSR.

### Attendance

A total of 16 visitors attended the Virtual Public Meeting.

### Advertising

The Virtual Public Meeting was advertised in the following ways:

- Two E-Blasts sent to the Project's Email Distribution List (Attachment H)
- Meeting information on the project website: [www.westanchoragesnow.com](http://www.westanchoragesnow.com)
- One advertisement in the *Anchorage Daily News* (Attachment I)
- Flyers posted around the Connor's Bog Dog Park (Attachment J)
- A post submitted to the What's Up listserv

### Summary of Comments

The comments received during the Virtual Public Meeting (Attachment K) focused primarily on the following:

- The height of the berm
- Details of the trail being built around the facility
- Details and purpose of the proposed fencing plan
- How possible contaminants/pollutants in the snow melt will be addressed
- Background as to why the access road will be constructed through the Chugach Electric Right-of-Way.
- Details of the rezoning process
- Possible impacts to the surrounding wetlands
- Cost and budget for the project
- Noise mitigation measures
- Landscaping plans for the area after the new snow disposal pad is constructed
- Public meeting advertising methods
- How members of the public should provide feedback on the draft DSR
- Availability of the Virtual Public Meeting materials
- Possible impacts on the wildlife and recreational opportunities offered by Connor's Bog



West Anchorage Snow Disposal Project  
Phase Three Public Outreach Summary

## Attachment A

September 10, 2021, Info Kiosk Photos





**Photo A:** Bill Spencer and Alice Rademacher staffing the Connor's Bog Dog Park Info Kiosk.



**Photo B:** A local resident stopping by the Info Kiosk while walking their dog.





**Photo C:** Sandwich board sign placed on the trail to advertise the info kiosk to trail/park users.



West Anchorage Snow Disposal Project  
Phase Three Public Outreach Summary

## Attachment B

### Snow Site Design Features Handout

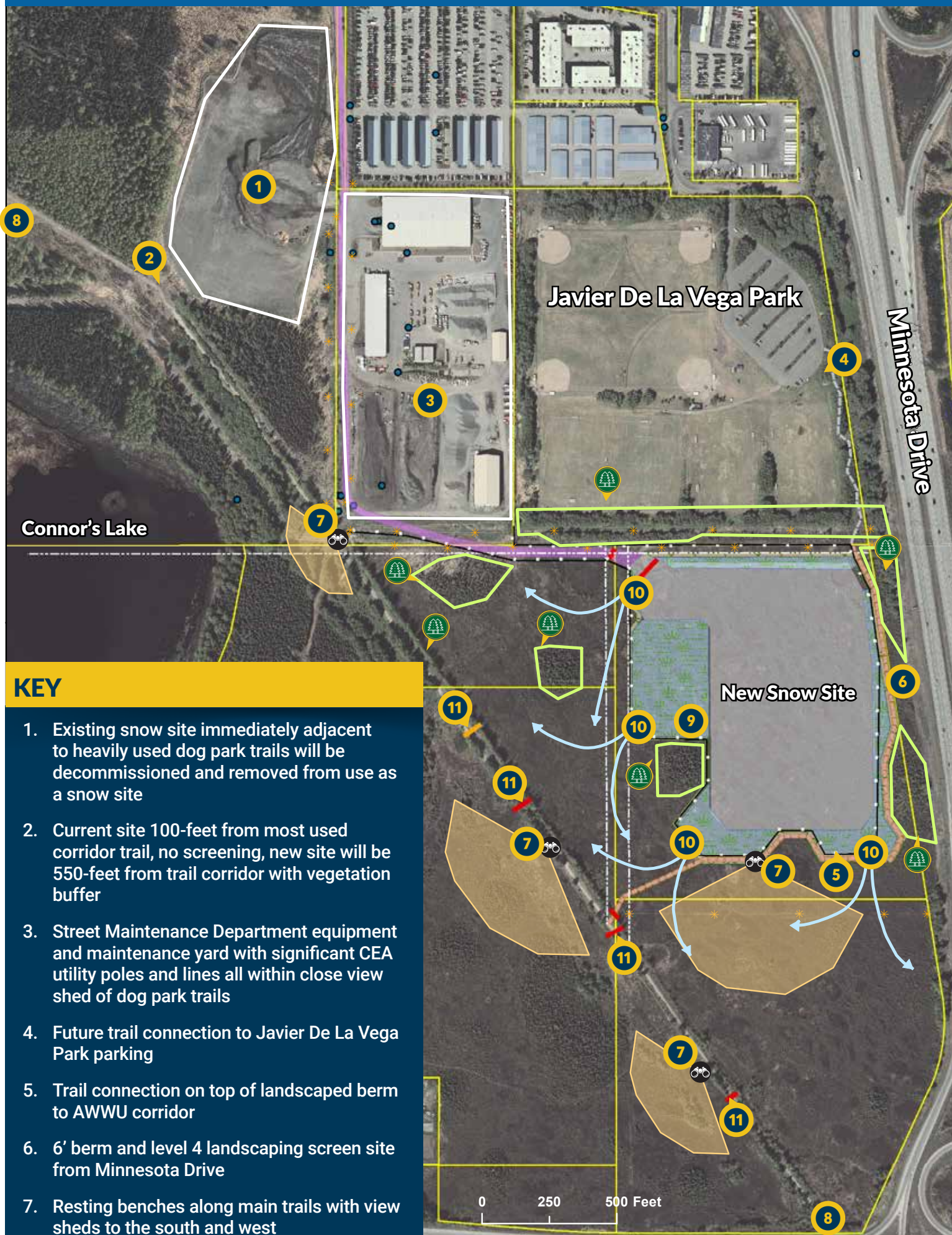




# West Anchorage Snow Disposal Project

Project Management and Engineering No. 19-01

## Snow Site Design Features



### KEY

1. Existing snow site immediately adjacent to heavily used dog park trails will be decommissioned and removed from use as a snow site
2. Current site 100-feet from most used corridor trail, no screening, new site will be 550-feet from trail corridor with vegetation buffer
3. Street Maintenance Department equipment and maintenance yard with significant CEA utility poles and lines all within close view shed of dog park trails
4. Future trail connection to Javier De La Vega Park parking
5. Trail connection on top of landscaped berm to AWWU corridor
6. 6' berm and level 4 landscaping screen site from Minnesota Drive
7. Resting benches along main trails with view sheds to the south and west
8. Kiosks near trail heads describing trail system
9. Larger than required detention and settling areas to ensure clean meltwater discharge
10. Four outfall points to disperse meltwater widely into marsh
11. Four cross culverts to disperse meltwater into western areas of marsh



Indicates mature trees retained for site screening.



Indicates Utility Pole

### QUESTIONS? CONTACT:



Email: [info@westanchoragesnow.com](mailto:info@westanchoragesnow.com)



Web: [www.westanchoragesnow.com](http://www.westanchoragesnow.com)



## **Attachment C**

### **Permitting and Design Handout**





# West Anchorage Snow Disposal Project

Project Management and Engineering No. 19-01

## Permitting and Design Process Update

### Overview

The Municipality of Anchorage (MOA) conducted a thorough site selection evaluation process to identify a future snow disposal location for snow removed from West Anchorage streets during winter months. The site selected for MOA West Anchorage snow disposal is located in Connor's Bog, which is 1,620 feet from the existing Northwood Snow Disposal Site.

The MOA currently leases the Northwood Snow Disposal Site from the State of Alaska. A municipally owned site is needed to meet long-term snow disposal needs for the West Anchorage service area. Please visit the project website at [www.westanchoragesnow.com](http://www.westanchoragesnow.com) to view project documents and find additional information about the purpose and need for the new site and the Site Selection Study.

### What's Happening Now?

Permitting and design work are currently underway. The applications for re-zoning and comprehensive plan amendment (Anchorage 2040 Land Use Plan Map) have been developed, and additional community meetings are being scheduled for late 2021. All upcoming meetings will be posted on the project website events calendar at [www.westanchoragesnow.com/events](http://www.westanchoragesnow.com/events).

The MOA Project Management & Engineering Department is planning to host a public meeting to update the community on the West Anchorage Snow Disposal Project and solicit feedback on the draft design in late 2021.

### Preliminary Design

A preliminary design for the future snow disposal site is currently being developed, and the public will be invited to provide comments on the draft design. Below is a graphic of the design features currently being considered and planned.

### Sign Up for Updates!

Sign up for the project email list to stay informed of project updates. You can sign up online at [www.westanchoragesnow.com](http://www.westanchoragesnow.com) or email the project team at [info@westanchoragesnow.com](mailto:info@westanchoragesnow.com).

For information regarding this project, the upcoming public meeting, project team contact information, and links to project documents, visit [www.westanchoragesnow.com](http://www.westanchoragesnow.com).



## **Attachment D**

**October 12, 2021, Info Kiosk Photos**



**Photo A:** October 12, 2021 Info Kiosk Poster and tent at the Jewel Lake parking lot of the Connors Bog Dog Park.



**Photo B:** Alice Rademacher answering questions and delivering project updates to two Info Kiosk attendees.





**Photo C:** Alice Rademacher delivering a project update to an Info Kiosk attendee.



**Photo D:** Two dogs near the Info Kiosk table while Bill Spencer delivered a project update to an Info Kiosk attendee.





**Photo E:** Alice Rademacher answering questions and delivering a project updates to an Info Kiosk attendee.



**Photo F:** Parking lot view of Dog Park visitors near the Info Kiosk.



West Anchorage Snow Disposal Project  
Phase Three Public Outreach Summary

## **Attachment E**

***Anchorage Daily News Advertisement***  
**– October 8, 2021**





LOREN HOLMES / Anchorage Daily News  
Chugach Electric Association has told the Regulatory Commission of Alaska that power sales from its North District — the former Municipal Light & Power service area that includes downtown Anchorage — were down 14 percent and billing demand was off nearly 16 percent for the 12 months ending May 31.

ENERGY

# Pandemic leaves Chugach Electric Association facing a revenue shortfall

**Elwood Brehmer**  
Alaska Journal of Commerce

With many once-bustling Anchorage office buildings dimmed as a result of the pandemic, Chugach Electric Association is having a hard time meeting its financial obligations, and utility leaders are asking for help from state regulators.

Attorneys for the state’s largest electric cooperative in early July filed a petition with the Regulatory Commission of Alaska asking to modify its detailed and highly technical approval of Chugach’s \$1 billion purchase of formerly city-owned Municipal Light and Power, so Chugach can remain in good standing with its lenders and avoid raising electric rates. The long-discussed deal closed in October 2020.

Chugach spokeswoman Julie Hasquet wrote via email that the pandemic “has taken a toll” on the utility’s revenue, noting that power demand from commercial customers is down about 8 percent for the Anchorage-area utility.

“Like many businesses, we are feeling the effects of the economic downturn. In response, we are managing costs, and we are asking the RCA to allow us to modify the stipulation (agreement) that was accepted when we bought ML&P,” Hasquet said. “The modification, if accepted by the RCA, would provide a reprieve on the treatment of certain expenses over the next several years. This reprieve would allow revenues to recover and additional savings to be realized through integration efforts. We certainly don’t want to raise rates in a pandemic.”

Chugach leaders emphasized before the deal was final that rates for customers of both utilities would not increase as a result of the purchase.

More specifically, Chugach leaders are asking the RCA to allow the utility to forgo amortization of \$19 million in fees and other costs related to the ML&P deal if it cannot maintain a “margin for interest” ratio of at least 1.20 on portions of the debt it took on to buy ML&P, according to the petition.

Chugach would continue to operate and maintain its books as if it will hit its original targets, but would “be entitled to reverse entries in its books associated

with the amortization” if the margin for interest ratio is less than 1.20 at year’s end, the petition states.

Chugach borrowed approximately \$800 million in private markets to purchase ML&P, according to Hasquet.

On Sept. 30, the state-owned Alaska Energy Authority became the latest stakeholder organization to back Chugach’s plan in filings with the RCA. AEA Director of Planning T.W. Patch, a former RCA commissioner, during the agency’s board meeting called the issue “inordinately complex” even in the oft-arcaic realm of utility regulation.

“Chugach has failed or is on the cusp of failing to meet certain covenants in its debt structure,” Patch described to the AEA board.

“If you borrow money and you promise that you will pay that money back, there is a cost to that money if you don’t meet certain earnings targets. That is the nexus of the present case before the RCA,” he added.

Patch also highlighted that no other stakeholders, such as the other Railbelt utilities, have offered what he believes would be a better solution; they have largely supported Chugach’s petition.

“Frankly, I’m not sure that there’s a better way to protect the ratepayers, which is what Chugach is attempting to do,” he said, adding he believes it’s likely the RCA will approve the request.

RCA officials do not comment on issues before the commission.

Chugach leaders once expected to close the year with margins of \$12.6 million and a margin for interest of 1.30 when they approved the utility’s 2021 budget late last year. However, that changed when Chugach received ML&P’s financial statements from the municipality the following month, according to the petition.

“Upon review, it became apparent ML&P (and now Chugach) was experiencing a significant decline in North District sales and revenues,” the filing states.

Chugach’s amended budget, including the updated ML&P figures, calculated out to year-end margins in the \$600,000 range.

The not-for-profit cooperative utility model is largely based on thin operating margins to keep members’ rates as low as possible. The structure typically works well in the highly regulated and mostly predictable power industry, but it often leaves little financial cushion for utilities when the balance is upset.

ML&P’s former service area in the north and east portions of Anchorage included the Downtown, Midtown and U-Med areas, which have some of the highest concentrations of offices and other businesses in the city.

According to the petition, power sales from Chugach’s North District — the former ML&P service area — were down 14 percent and billing demand was off nearly 16 percent for the 12 months ending May 31. That resulted in a \$16.2 million decrease in base revenue for the North District, while Chugach saw revenue from its more residential Southern District decline by just about \$400,000 over the same period.

More broadly, Chugach and other large energy utilities in Alaska are facing flat or declining demand now and for the foreseeable future from a declining state population, as well as more efficient appliances causing households to use less energy.

Chugach’s purchase of ML&P had been contemplated for decades and was supported by some prominent Anchorage business leaders. Chugach officials insist it has still been beneficial to the community and ratepayers overall. They note ML&P would be facing the same situation if it were still a standalone utility and Chugach has so far captured savings of approximately \$21 million in fuel, labor and not needing to account for inter-governmental charges, according to Hasquet.

“We are saving roughly \$1 million each month in fuel alone. We expect savings to continue to materialize over the next several years as integration efforts are completed,” Hasquet wrote.

Elwood Brehmer is a reporter for the Alaska Journal of Commerce. Email him: [elwood.brehmer@alaskajournal.com](mailto:elwood.brehmer@alaskajournal.com)

# Elon Musk says Tesla will move HQ from California to Texas

**Alex Veiga**  
Associated Press

Tesla will relocate its headquarters from Palo Alto, California, to Austin, Texas, though the electric car maker will keep expanding its manufacturing capacity in the Golden State, CEO Elon Musk said Thursday.

Musk, who last year said he was moving to Texas from California, gave no timeline for the move when he addressed shareholders at Tesla’s annual meeting.

In the early days of the coronavirus pandemic, Musk clashed with San Francisco Bay Area health authorities trying to enforce shelter-in-place orders. At the time, he threatened to relocate Tesla’s operations to Texas or Nevada.

On Thursday, however, Musk cited the cost of housing in the Bay Area that has made it tough for many people to become homeowners, translating into long commutes.

“We’re taking it as far

as possible, but there’s a limit how big you can scale it in the Bay Area,” he said Thursday. “Just to be clear, though, we will be continuing to expand our activities in California. This is not a matter of leaving California.”

Musk stressed he plans to expand the company’s factory in Fremont, California, where Tesla’s Model S and Model X cars are built, in hopes of increasing its output by 50%.

The announcement drew cheers and applause from the small audience at Tesla’s manufacturing plant in Austin, where Musk delivered his remarks, which were webcast live.

While applauding Tesla’s announcement that it will expand production in Fremont, Bay Area business leaders bemoaned the headquarters move as the latest sign of the region’s ongoing issues.

“Mr. Musk’s announcement highlights yet again the urgency for California

to address our housing affordability crisis and the many other challenges that make it so difficult for companies to grow here,” said Jim Wunderman, president and CEO of the business advocacy group Bay Area Council.

Last year, tech giant Oracle Corp. decided to move its headquarters from Silicon Valley to Austin, saying the move would give its employees more flexibility about where and how they work. One of Silicon Valley’s founding companies, Hewlett-Packard Enterprise, has also said it will move to the Houston area.

At Thursday’s meeting Musk also touted the company’s record vehicle deliveries this year, while noting that global supply-chain disruptions that have led to a shortage of computer chips remain a challenge.

“It looks like we have a good chance of maintaining that into the future,” he said. “Basically, if we get the chips, we can do it.”

# US initial jobless claims fell more than expected last week

**Reade Pickert**  
Bloomberg News

Applications for U.S. state unemployment benefits retreated last week to the lowest in a month in a broad-based decline, pointing to ongoing improvement in the labor market.

Initial unemployment claims in regular state programs totaled 326,000 in the week ended Oct. 2, a decrease of 38,000 from the prior week, Labor Department data showed Thursday. The median estimate in a Bloomberg survey of economists called for a decrease to 348,000 applications.

Continuing claims for state benefits fell to 2.7 million in the week ended Sept. 25.

Layoffs have eased amid an improving economy, with employers now focused on hiring and retaining workers. And while the U.S. continues to recover jobs lost at the start of the pandemic, the massive snapback in demand has outpaced businesses’ ability to hire and strained already-jammed supply chains.

That’s led to production slowdowns and even temporary layoffs at some firms, fueling additional churn in the weekly initial claims figures.

Stocks opened higher, while the yield on the 10-year Treasury advanced and the dollar was little changed.

Unadjusted initial claims in California

dropped by more than 10,000, the most among the states. In recent weeks, a surge in unemployment applications in California has driven up the nationwide total, even as many other states reported fewer claims.

Applications also notably declined in Michigan, Texas and Washington, D.C.

The monthly September employment report, out Friday, is projected to show nonfarm payrolls grew by half a million in the month. That would double the number of jobs added in August. Data from ADP Research Institute Wednesday showed U.S. companies added more jobs than forecast in September.

# ALASKA529

BIG DREAMS ARE NEVER SMALL POTATOES.

It’s time to get in gear.

Use your savings for eligible apprenticeships, vocational schools, or universities both in or out of Alaska.

**SAVE IN ALASKA. STUDY ANYWHERE.**

1-888-4-ALASKA | [Alaska529plan.com](http://Alaska529plan.com)

Go online or call the number listed above to request a Plan Disclosure Document, which includes investment objectives, risks, fees, expenses, and other information. You should read the Plan Disclosure Document carefully before investing. Offered by the Education Trust of Alaska. T. Rowe Price Investment Services, Inc., Distributor/Underwriter.

202109-1832590

## West Anchorage Snow Disposal Project

Project Management and Engineering No. 19-01

### Please join us at our upcoming Info Kiosk and Virtual Public Meeting!

Join us for project updates on current permitting and design work.

#### Info Kiosk

**October 12, 2021**  
3:30 p.m. to 5:30 p.m.

**Connors Bog Dog Park – Jewel Lake Parking Lot**

#### Virtual Public Meeting

**November 9, 2021**  
4:30 p.m. to 6:30 p.m.

**Log-in information is available at [www.westanchoragesnow.com](http://www.westanchoragesnow.com)**

#### Questions? Contact:

- Web:** [www.westanchoragesnow.com](http://www.westanchoragesnow.com)
- Email:** [info@westanchoragesnow.com](mailto:info@westanchoragesnow.com)





## **Attachment F**

**Written Comments Submitted at the  
October Info Kiosk**



# West Anchorage Snow Disposal Project



[www.westanchoragesnow.com](http://www.westanchoragesnow.com)

**Please share your comments.**

Comments can also be e-mailed to  
[info@westanchoragesnow.com](mailto:info@westanchoragesnow.com)

Put a fence around it to  
keep animals (fox, moose) out

Name: \_\_\_\_\_

Email: \_\_\_\_\_

Address: \_\_\_\_\_

City: \_\_\_\_\_ State: \_\_\_\_\_ Zip: \_\_\_\_\_

Please add me to the project e-mail list. ☐



# West Anchorage Snow Disposal Project

[www.westanchoragesnow.com](http://www.westanchoragesnow.com)



**Please share your comments.**

Comments can also be e-mailed to  
[info@westanchoragesnow.com](mailto:info@westanchoragesnow.com)

I think the proposed changes sound great!

Name:

Email:

Address:

City:  State:  Zip:

Please add me to the project e-mail list. ☐



West Anchorage Snow Disposal Project  
Phase Three Public Outreach Summary

## **Attachment G**

### **Virtual Public Meeting Presentation**



# West Anchorage Snow Disposal Project

PM&E Project No. 19-01  
Public Meeting Presentation November 9, 2021







## Snow Haul Primer

- 1,300 lane miles
- 62,000 truck loads in '20-'21
- Snow sites now down to 8
- Increasing snow fall
- Loss of snow storage due to corridor improvements

# Going snowwhere: After 106 inches, Anchorage needs more snow dumps

February 14, 2012 | 12:36 pm





# Snow Disposal Service Area







## Selected Location: Connor's Bog

### Advantages:

- Undeveloped, MOA owned
- Low impact on residents and neighbors
- Maintains meltwater drainage to Connor's Bog and Lake
- Adequate size
- Not dedicated park land
- No operational restrictions

### Considerations:

- Requires filling a portion of the Connor's Bog wetlands







# Permitting Steps Completed or in Process

## West Anchorage Snow Disposal Project

1

### Rezoning

Classification change from Transitional (TR) to Public Lands and Institutional (PLI)

2

### Comprehensive Plan Amendment

Anchorage 2040 Land Use Plan Map

3

Approval for Other Municipal Use of 0.2 acres of Dedicated Park Land  
for the access road

4

### Variances of Title 21 and Municipal Design Criteria

As identified in the Design Study Report

5

### Conditional Use Permits

Land Reclamation and Snow Disposal Site

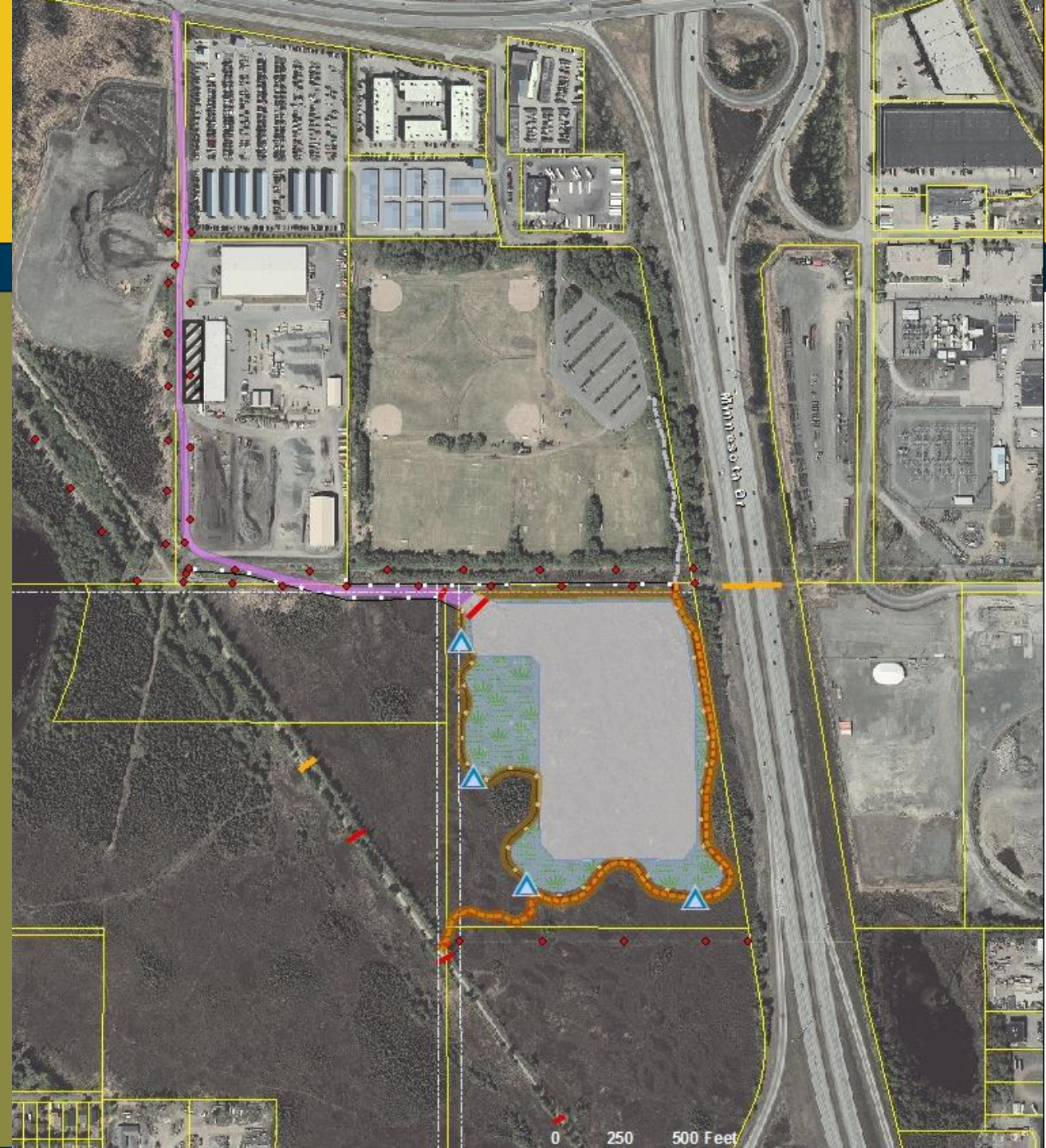




# Draft Design, Existing

## Existing Conditions

- 32 acres Undeveloped
- Peat bog, low shrubs, stands of Cottonwood and Black Spruce
- Non-Jurisdictional, Class A Wetlands
- CEA Power lines north and south
- Limited recreational use on parcel, adjoins popular off-leash dog park to the west along AWWU sewer line corridor.
- Moose fence along Minnesota Drive







# Draft Design, Access

## Access Route

- Similar to existing Northwood site off International Airport Road
- Past the Kloep Maintenance shops.
- Down the slope to the bog and east to the snow site.

## Lighting

- Access road will have limited lighting for night operations safety.

## Kloep Parking

- Kloep Station parking will accommodate truck haul route.







# Draft Design, Pad

## Pad

- 14-acre snow deposition pad

## Berm

- Raised earthen berm encircling the site

## Weirs

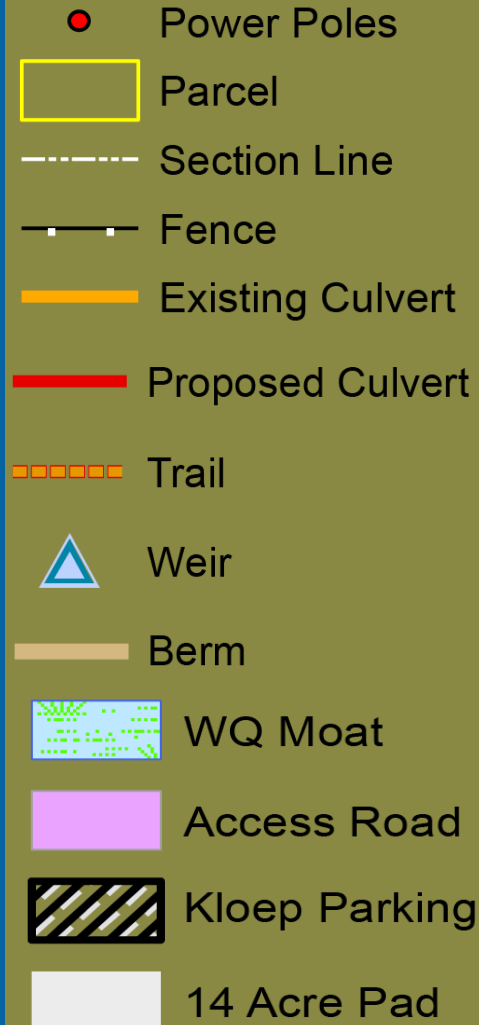
- Controlled release of meltwater into the larger area of Connor's bog

## Soft Surface Trail

- On top of berm, extending from Javier de la Vega Park to AWWU corridor

## Fencing

- 6-ft high perimeter fence for safety of park users, contains air borne litter. Ties into existing fencing around Javier de la Vega park and Kloop Station







# Draft Design, Buffering

## Buffering

- Set back from all easements, snow deposition area contained within berms and landscaping

## Existing Vegetation

- Existing trees retained for screening around site

## Landscaping

- Level 4 landscaping along Minnesota Drive

## Noise

- Existing vegetation and maximum distance from residential dwelling.







# Draft Design, Drainage

## Drainage

- Existing drainage depicted by blue lines
- Proposed drainage changes shown as yellow
- Meltwater flows off pad into moat areas
- Moats detain water for settlement and attenuation
- Weirs control discharge from the Moat area to the larger marsh
- Dispersed flow paths hydrate a larger area of the marsh for habitat benefits.

### Proposed Drainage and Trails

- Proposed Culvert
- Proposed Drainage
- - - Trail
- Weir

### Existing Drainage

- Existing Culvert
- Existing Drainage

### Proposed Snow Site

- 14 Acre Pad
- Access Road
- Admin Parking
- Berm
- Moat
- Parcel



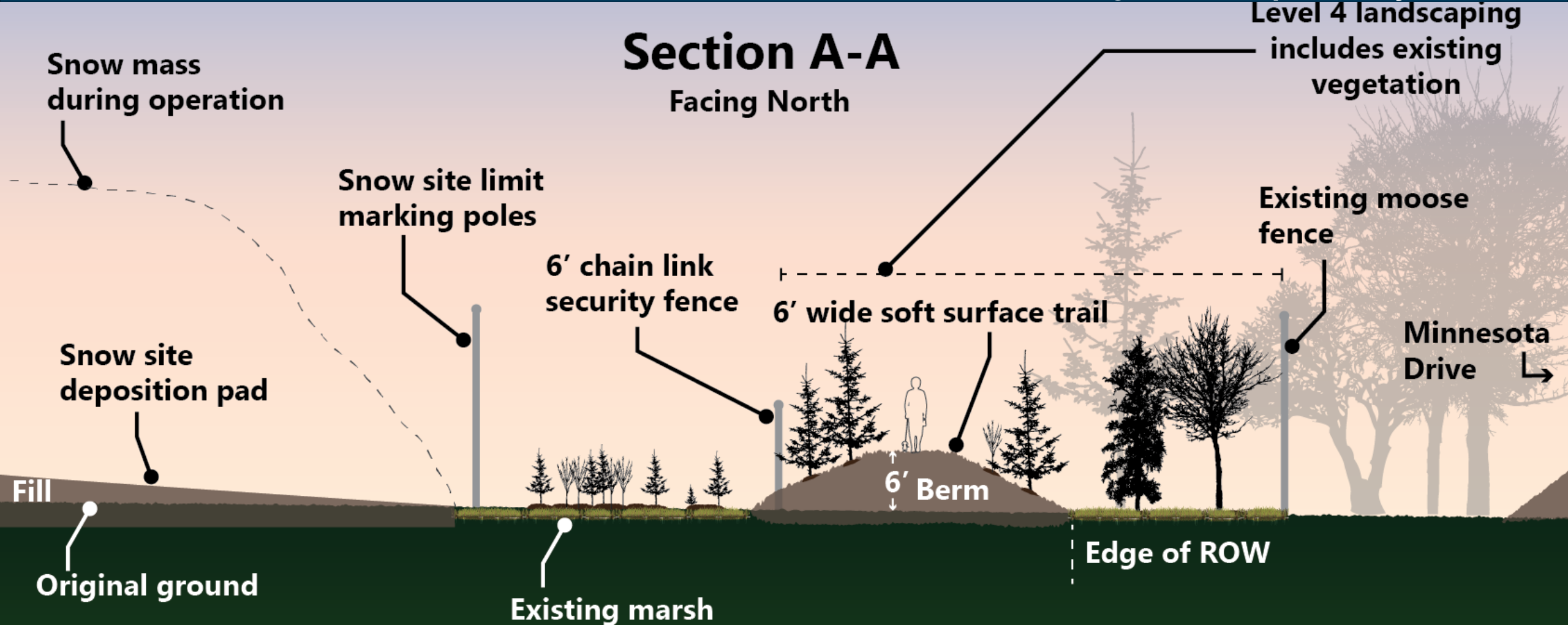




# Draft Design, Sections

## West Anchorage Snow Disposal Project

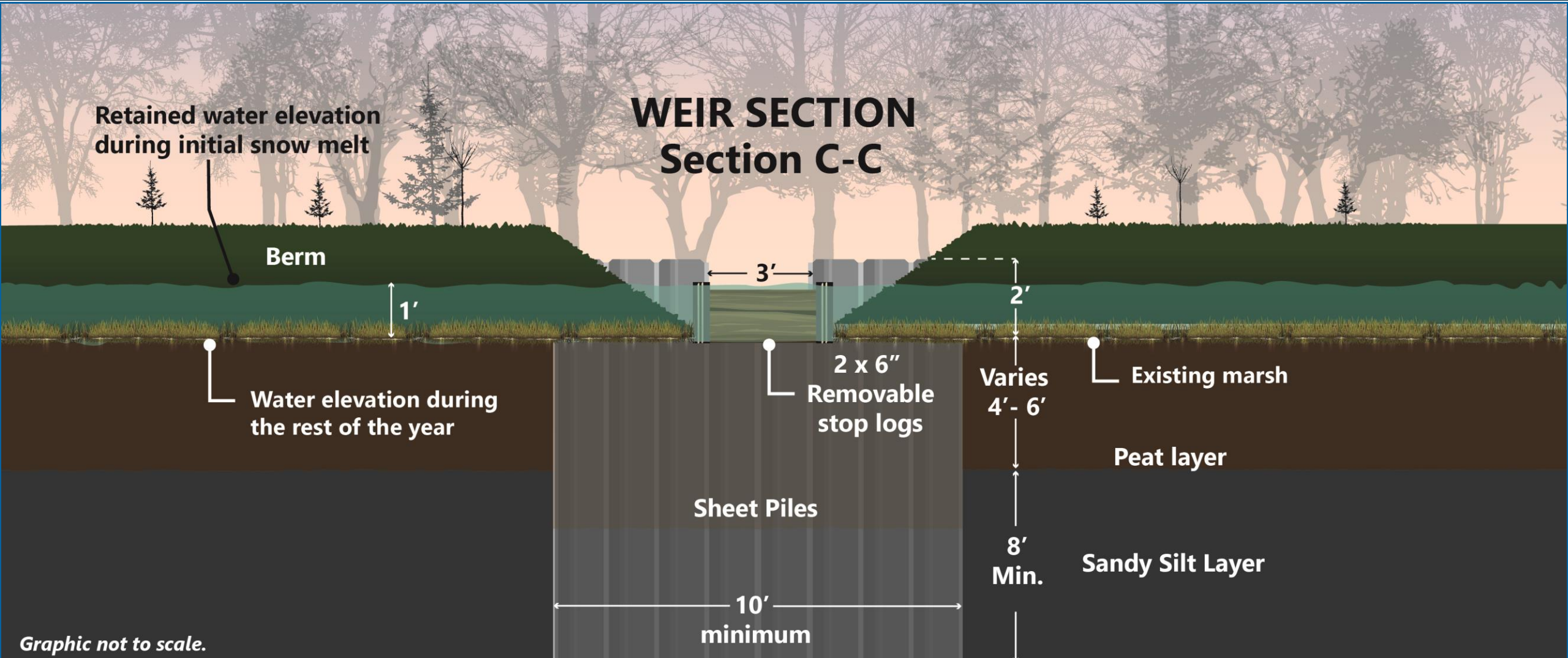
### Section A-A Facing North





# Draft Design, Weir

## West Anchorage Snow Disposal Project



Graphic not to scale.



# Project Schedule

## West Anchorage Snow Disposal Project

Construction is planned for 2023 pending funding and permitting approvals.

PROJECT SCHEDULE	2019	2020	2021	2022	2023
Data Collection					
Site Selection					
Permitting					
Field Work / Design					
Construction					
Public Involvement					

 Indicates Public Open House



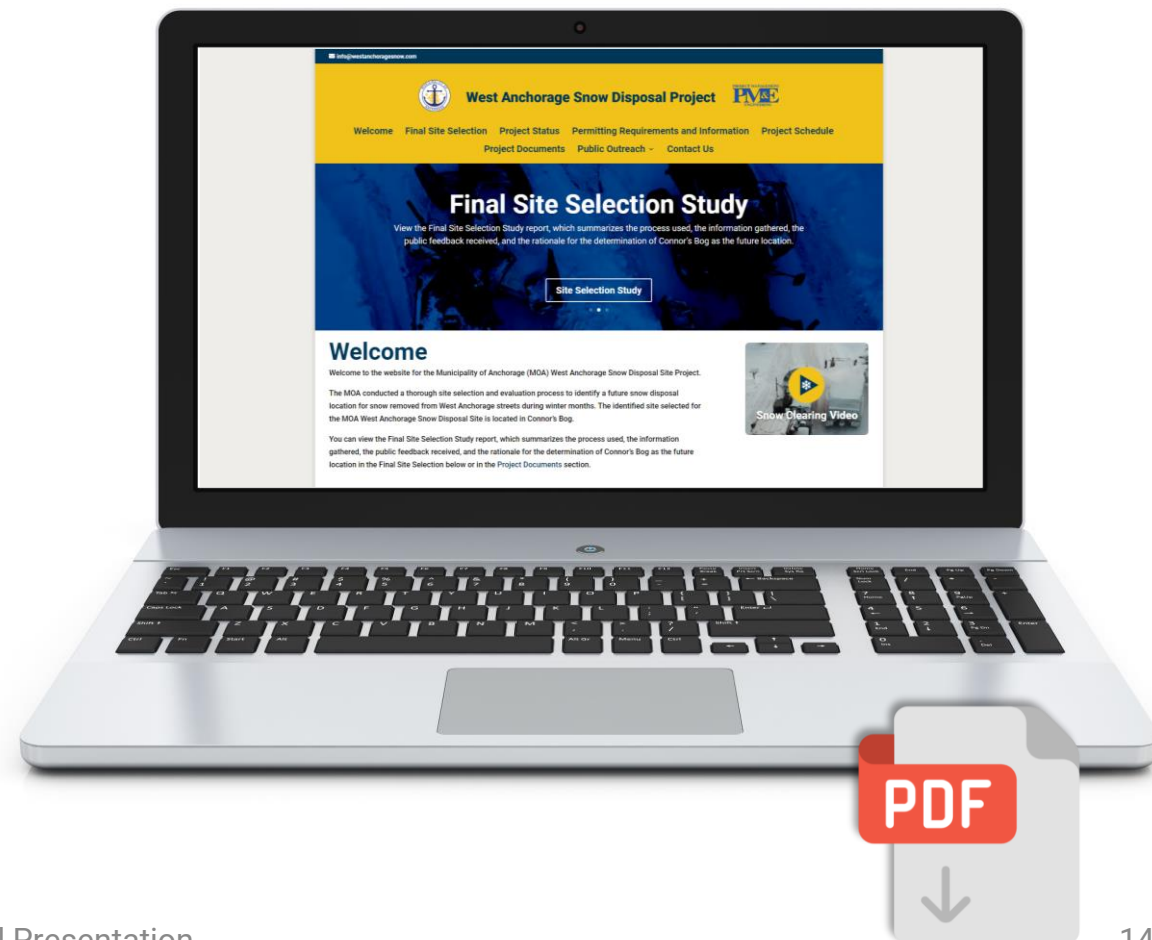


# Find more information

Visit the project website for more information and to download project documents!

**westanchoragesnow.com**

## West Anchorage Snow Disposal Project





# Questions?

## West Anchorage Snow Disposal Project

**Melinda Tsu, P.E.,**  
Project Manager

**Julie Makela, P.E.,**  
Project Administrator



[info@westanchoragesnow.com](mailto:info@westanchoragesnow.com)



[www.westanchoragesnow.com](http://www.westanchoragesnow.com)



**(907) 644-2030**



# Need to ask a question verbally?

## Desktop

👋 Click Participants and then click **Raise hand** next to your name.

🚫 To lower your hand, click **Lower hand** next to your name in the Participants panel.



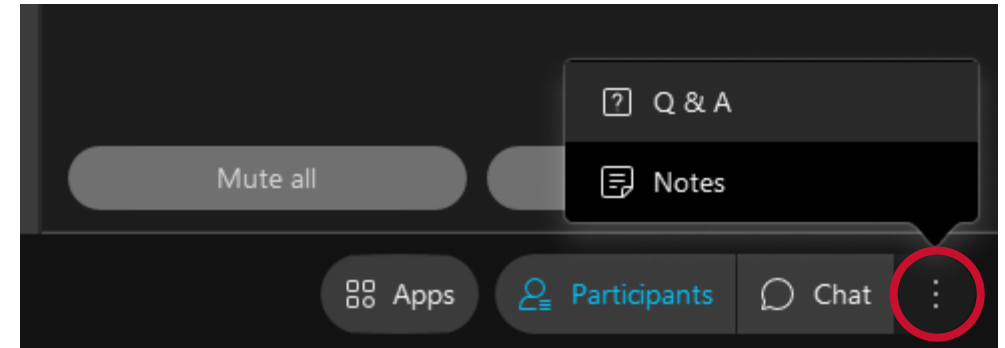
## Mobile

⋮ Tap More, then tap **Raise hand** or **Lower hand**.

# Need to type a question?

## ⋮ Open Q&A Panel

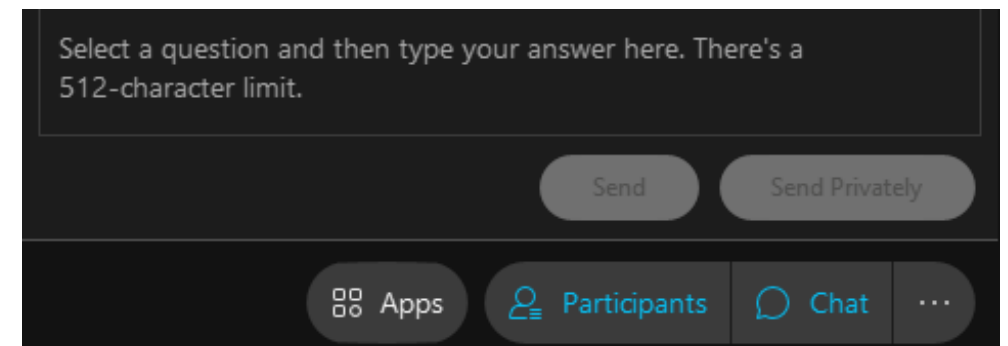
To open the Q&A panel, click the **Panel Options** icon and select Q&A.



## Ask (type) question

Once **Q&A Panel** is open, select who you'd like to ask from the dropdown menu.

Click **Send** to send the question publically (to all participating on the call) or **Send Privately** and choose who you'd like to send your question to.





## Attachment H

### E-Blasts



[View this email in your browser](#)



## West Anchorage Snow Disposal Project



# Please Join Us!

## West Anchorage Snow Disposal Project Virtual Public Meeting

---



### Virtual Public Meeting

[www.westanchoragesnow.com](http://www.westanchoragesnow.com)



**Tuesday  
November 9, 2021  
4:00pm - 6:00pm**

---

Design and Permitting work are underway for the new West Anchorage Snow Disposal Site, which will be located at Connor's Bog. The project team will consider all feedback received throughout this phase of the project.

You are invited to attend a Virtual Public Meeting, which will include a project update and discussion on the draft Design Study Report of the new snow disposal site.

---



Visit [www.westanchoragesnow.com](http://www.westanchoragesnow.com) for project information or to submit comments. You can also contact the project team at [info@westanchoragesnow.com](mailto:info@westanchoragesnow.com).

Project Management and Engineering No. 19-01  
Copyright © 2021 West Anchorage Snow Disposal, All rights reserved.

Want to change how you receive these emails?  
You can [update your preferences](#) or [unsubscribe from this list](#).





## REMINDER

### West Anchorage Snow Disposal Project Virtual Public Meeting

---



**Virtual Public  
Meeting**

[www.westanchoragesnow.com](http://www.westanchoragesnow.com)



**Tuesday  
November 9, 2021  
4:00pm - 6:00pm**

---

Design and Permitting work are underway for the new West Anchorage Snow Disposal Site, which will be located at Connor's Bog. The project team will consider all feedback received throughout this phase of the project.

You are invited to attend a Virtual Public Meeting, which will include a project update and discussion on the draft Design Study Report of the new snow disposal site.

---



Visit [www.westanchoragesnow.com](http://www.westanchoragesnow.com) for project information or to submit comments. You can also contact the project team at [info@westanchoragesnow.com](mailto:info@westanchoragesnow.com).



## West Anchorage Snow Disposal Project Phase Three Public Outreach Summary

### **Attachment I**

**Flyers posted at the Connor's Bog  
Dog Park**





# West Anchorage Snow Disposal Project

Project Management and Engineering No. 19-01

**Please Join Us!**  
**Virtual Public Meeting**  
**Tuesday, November 9, 2021**  
**4:00 pm – 6:00 pm**

**[www.westanchoragesnow.com](http://www.westanchoragesnow.com)**



Design and permitting work are underway for the new West Anchorage Snow Disposal Site, which will be located at Connor's Bog. Public feedback is important, and the project team will consider all feedback received throughout this phase of the project.

You are invited to attend a Virtual Public Meeting, which will include a project update and discussion of the project's draft Design Study Report.

Visit [www.westanchoragesnow.com](http://www.westanchoragesnow.com) to find the meeting link or to submit comments. You can also contact the project team at [info@westanchoragesnow.com](mailto:info@westanchoragesnow.com).



## Attachment J

### Comment Log

**West Anchorage Snow Disposal**  
**November 9, 2021 Virtual Public Meeting**  
**Public Comments and Answers**

Public Comment/Question	Answer
How high will the berm be?	<p>The Project Team explained that the height will be variable. Along the east and south sides, the berm will be 6 feet tall since the trail will be on top of it. The higher berm will keep the trail out of the marsh and allow for landscaping.</p> <p>Along berm on the west side will be 3 feet tall and covered with grass. This area will be used to retain water. The existing large tree stands will offer a natural screen so additional landscaping will not be needed.</p>
Why is the trail being built around a facility?	<p>The Project Team noted that the project team received comments that people do occasionally traverse between Javier De La Vega Park and the park corridor and AWWU access road.</p> <p>With small enhancements a recreational trail can be placed on top of the berm that encloses the site. This would give people access to and from Javier De La Vega Park and park corridor. Parks and Rec also indicated that they would like to see something like that.</p>
What is the width/distance between the new security fence and the moose fence along Minnesota Drive?	<p>The Project Team responded that on the eastern edge of the pad, the trail, for a short distance, gets within about 100 feet of the moose fence. The distance is considerably greater in the northern area of the facility and to the south. Also, the trail will be on top of the berm and the snow site fence is on the inside of the berm.</p>
How are the contaminants in the snow melt being addressed?	<p>The Project Team explained that meltwater will be contained behind the berms to provide settlement of sediment and then the filtered water will be released over the weirs. Chloride concentrations will be minimal due to the current maintenance practices and any residual from the meltwater will be diluted within the area captured by the berms prior to discharge.</p>
What alternatives were looked at to access the snow dump area? I am concerned about going across or putting the road in the Chugach Electric right-of-way.	<p>The Project Team let the commentor know that access off Minnesota Drive is not an option. Due to its road type, there are restrictions to have a direct access to the snow disposal site. Access from Raspberry would result in a larger impact area and was not favored.</p> <p>The Project Team coordinated very early on with Chugach Electric regarding accessing through their easements. The Dowling/Spruce snow disposal site also uses a Chugach Electric easement for access.</p>
What was Connor's Bog initial designation?	<p>The Project Team responded that it was originally zoned as transitional/TR zoning. We recently received unanimous approval by the assembly to change that to public lands and institutions.</p>
Over time, what will happen to sediments and chlorides inside the detention area?	<p>The Project Team answered they looked at the 100th Avenue snow disposal site since it drains off into wetlands without much deposition beyond the edge of the pad. Most of the sediments are retained either on the pad or they're fine enough that they go through the system.</p> <p>Chlorides are not expected to build up. The design will retain the high chloride initial burst until we get more melt water, and then all the diluted water will go into the larger bog. The current Northwood site has been in operation for over 30 years without a substantial buildup of chlorides in the area.</p>



<p>It appears that the design of this project is quite a bit bigger than the former snow dump. Considering you're dealing with Class A wetlands; shouldn't every attempt be made to minimize the impact on wetlands that are going to be eliminated? Regarding the wetlands that are developed, is there going to be some place in west Anchorage that is preserving Class A wetlands to make up for the wetlands that are lost in our area?</p>	<p>The Project Team responded that the size of the current site has fluctuated over the years, depending on what the lease arrangement allowed. Typically, the agreement allowed for 12 acres but even this size resulted in very high snow pile stacks during large snow years. The city is trying to limit the height of their snow piles to less than 30 feet to meet design criteria. Fourteen acres for the snow deposit pad will be needed for this site to be able to comply with the height limit during large snow years and to accommodate future snow storage needs anticipated.</p> <p>The Class A wetlands within the project limits are not under the U.S. Army Corps of Engineers' jurisdiction and therefore a Corps permit is not required and wetland mitigation in the form of conservation easements are also not required. The project team did look to minimize the project footprint in ways such as routing the access to the snow site facility from the existing MOA maintenance facility to the north, thereby minimizing impacts to the wetlands.</p>
<p>Can you show exactly where fencing will be placed?</p>	<p>The Project Team referenced the concept design graphic and noted that the white dots, and black line are representative of the fence. Also, fencing currently exists along the northside of the property, through the wetlands, and around the maintenance yard.</p>
<p>What is the cost? The CIP five-year plan projects 9.9 million in 2023 to 2024 bonds, down from last year's CIP budget totaling 11.27 million. So, what is the cost?</p>	<p>The Project Team responded that the Draft DSR estimates that the construction cost will be about \$8 million.</p>
<p>Will the airport be able to use this site? I'm concerned about chemicals used to de-ice the planes if they are.</p>	<p>The Project Team replied that the site is only intended for the Municipality of Anchorage use, and not the airport.</p>
<p>Bill said when the usage at Connor's Bog was assessed, it was determined light usage. How do you determine usage? I've been walking my dogs at the bog for 25 years and have seen the usage go from light to pretty much constant. Also, Connor's Bog is a wetland and wildlife habitat that serves many migrating birds, fox, moose, et cetera, as well as a dog park. Was the only reason Connor was picked over Strawberry Bog because of future development?</p>	<p>The Project Team responded that the dog park is an extremely popular area. We've talked to some of the people that use trails near the proposed site, but the use is very light compared to the rest of the dog park area around the lake and up and down the AWWU corridor. We looked at the various sites and it came down to the two sites, Connor's Bog site and Strawberry Bog site which is closer to residential areas.</p> <p>One thing that is very important to our snow hauling and snow storage operations, is that the site can be operated with no daytime or nighttime restrictions, 24 hours a day, 7 days a week. The Connor's Bog site is more suited because it is farther away from residential property.</p>
<p>Has the Corps determination changed under the Biden administration?</p>	<p>The Project Team noted that we received an approved jurisdictional determination in late 2020, and the Corps makes those determinations with the regulations that are in place at the time. That determination is still in place.</p>
<p>What is the land classification for the Strawberry Bog site, Connor being Class A wetlands?</p>	<p>The Project Team responded that Strawberry Bog is almost entirely Class A wetlands, and the portion that we were looking at in the site selection study is entirely Class A wetlands, as well.</p>

Turnagain Community Council is requesting, as a condition of approval, the remainder of the Municipality of Anchorage's own Connor's Bog wetlands be rezoned to PR and become dedicated parkland. Is the project team willing to work with the community and parks to make that happen?	<p>The Project Team responded that this project is focused on the purpose and need which is relocating the snow disposal site. As a permittee for developing this project, the petition site is specific to the parcel where the project is located and not the surrounding areas.</p> <p>If the Turnagain Community Council so desires, then they can have that conversation with other municipal departments (Parks and Rec, Real Estate, and Heritage Land Bank). Our action doesn't preclude those conversations to continue, but they are not part of this project.</p>
Thank you. My question is, unfortunately because the graphics are rather small on the computer, when I'm looking at the access road from International, my understanding is that it's still going to be going across state land. And maybe I'm wrong about that, but if it is state land, I'm wondering about the state, at some point, if they're in a peak about it, closing access, which will be a real problem for the snow dump being there. I also have a comment that, there have been issues about noise from the snow dump. My husband and I have lived here 34 years, and the snow dump, itself, is not loud. But when the trucks are coming down oftentimes, they use their air brakes, which is illegal, but there's nobody to complain to. So, there may not be any complaints on record about the operations. It doesn't mean that there are not complaints in the community.	<p>The Project Team responded that Northwood Drive is an MOA road. The access road continues onto MOA's street maintenance parcel and is not on state property.</p> <p>The Project Team added that the phone number, (907) 343-8277, can be called to register complaints. If it's after hours, you can leave a message or e-mail, and we'd be more than happy to investigate it. We brief all drivers. We're trying to prevent the use of air brakes or jake brakes. We will monitor that better and continue to brief our folks. If we notice something, we will try and put an end to that. Please as you do notice that happening please let us know and we can try and stay on it. DOT regulations do not allow for the use of air brakes in town, so they shouldn't be doing that. Unfortunately, it's hard to prevent, but we can try to do a better job on that.</p>
I would much prefer evergreen trees planted on top of the berm in some places, rather than a trail. Open to working with community on modifications.	The Project Team thanked the meeting attendee for their comment and informed them that it will be documented as part of this public meeting.
Municipality of Anchorage currently has a lease application out for comment to continue to use Airport Northwood Drive site use for three years with two one-year extensions.	<p>The Project Team thanked the meeting attendee for their comment and informed them that it will be documented as part of this public meeting.</p> <p>The Project Team added that she talked to the MOA real estate folks, and they confirmed that it's a pay-as-you-go. MOA does not have to pay for the full three years up front but having that time frame allows the project team to continue developing this project, secure the funding, and permits.</p>
What wildlife/bird use studies have been done to date to know what impacts this development will have?	The Project Team responded that the Anchorage Wetlands Management Plan has good information on the use of Connor's Bog by many animal species.

<p>If resubmitted the Corps determination now, would there be any difference from determination in late 2020?</p>	<p>The Project Team replied that action is not going to happen, and they could not comment on a speculative scenario.</p>
<p>Have there been any concerns about distributing the underlying layers of strata that are barriers to draining the bog? I'm concerned that disturbing the ceiling layers will possibly drain the bog.</p>	<p>The Project Team responded that during this project we have been able to reference an extensive soils report. The Project Team added that a sandy silt layer is the confining layer for an artesian aquifer underneath the bog and that project infrastructure would not impact that layer.</p>
<p>Where are the Connor Bog public input meetings posted? I missed the first two input meetings because I was not aware that they took place. This meeting tonight was posted at the bog where I saw it.</p>	<p>The Project Team replied that the public meetings are advertised in a variety of ways. For example, flyers posted around the Connor's Bog dog park, the placement of newspaper ads, and E-Blasts sent to the Project's email distribution list. The Project Team let the commentor know that they can either e-mail the project team or go to the website to sign up for e-mail notifications. E-mail notifications can be sent to you and every single public meeting opportunity is posted on the website. The Project Team added that on the project website, there's a tab called, project documents. Here you can access the Phase I and Phase II public outreach summaries. The documents will inform you on the previous two meetings that we've had.</p>
<p>Since the Anchorage Wetlands Management Plan was referenced, the enforceable policy for Connor's Bog states that Connor's Bog shall be protected. She says she is paraphrasing on that. Please address how that is being bypassed.</p>	<p>The Project Team replied that this project application is reviewed for consistency for adopted plan goal compliance. The planning staff has recommended the rezoning and the comp plan amendment.</p>
<p>Why weren't the pop-up meetings or the info kiosks sent out via e-mail like this meeting was?</p>	<p>The Project Team responded that the two formal meetings were held virtually due to social distancing practices to take precautions during the COVID-19 pandemic. However, we wanted to test out Info Kiosks, which are spontaneous events to meet and engage with people where they're at. After the September Info Kiosk proved to be a success, we advertised the October Info Kiosk by posting flyers at the entrances to the Dog Park and placing a newspaper ad.</p>
<p>Has there been a legal review of the Wetlands Management Plan enforceable policies? I highly recommend that, and that the review be released to the public before you move forward.</p>	<p>The Project Team noted that Thede Tobish, an MOA subject matter expert on wetlands management who was very familiar with the Wetlands Management Plan, was consulted on this project. This consultation and review of the Plan guided the project development process to conduct a site selection study to arrive at a site location deemed the least environmentally practicable alternative. The Plan also advises other management practices when avoidance is not possible such as footprint minimization and rehydration of wetlands as enhancements, both of which were employed in the project concept design.</p>
<p>I don't believe the site plan references the Anchorage Wetlands Plan. Please tell me where that can be found.</p>	<p>The Project Team responded that the plan is posted on the MOA Planning Department's publications page.</p>



Has the comment deadline for draft Design Study Report been set?	The Project Team responded that we would request for all comments or ideas and feedback on that Design Study Report to be submitted by December 10 <sup>th</sup> . But the project team welcomes your comments or questions anytime.
Has there been a consideration of taking over the park east of the maintenance facility and then converting the existing snow dump to a park? The park east of the maintenance facility has many issues with being wet and not very usable.	The Project Team responded that it's never been considered or discussed because that is dedicated park land. The Northwoods Drive site is owned by the airport, the State of Alaska. A park cannot be moved on to state land. De La Vega field is a former landfill. We wouldn't consider putting a snow disposal site on a former landfill.
I'm wondering if all the questions and comments that you're allowing to be considered up into December 10th, will that be reflected in the draft report or the report that you'll be issuing after that? In other words, like, if I send an e-mail in with some more questions or comments, will that be reflected in a way that the public can see.	The Project Team replied that we prepare a summary with our public involvement team. The questions and comments that came in today, and that are submitted before December 10 <sup>th</sup> will be captured in the Phase 3 outreach summary.
Interesting answer to the question on using the park as a snow dump because they use the area south of Merrill Field as a snow dump, and it was a former landfill.	The Project Team responded that the snow site is south of DeBarr Road and 15th Avenue. That area isn't on the top of a formal landfill. Merrill Field is, itself, but not the actual snow disposal site.
I was just curious, since I've gotten into the meeting late, you said that the presentation is going to be available online, the presentation that was given during the meeting. Will there also be minutes provided for this meeting where we can see kind of an overview of what was discussed or other questions that were asked, anything like that?	The Project Team replied that all comments and questions are being documented and will be available in the Phase 3 Public Outreach Summary on the project website. If you have questions and want to e-mail or call us, then please don't hesitate to do that.
I want to thank everybody for answering all my questions. I just wanted to make some comments. I have lived in Spenard for 33 years, and of those 33 years, I have been almost a daily visitor at Connor Bog through 365 days a year. So, we skijored with our dogs with my friends, and I've just seen it, all these years, through all the seasons, and it's such a beautiful and precious place to me and to our city. And when it became a dog park, the usage	The Project Team responded that we would keep all comments and questions as part of the project documentation, and they will be considered by the project team.

exploded, and I welcomed that. You know, I see so many people, all ages, all -- families walking and using the park alongside a lot of wildlife. And that area that you're designating, right now, for snow removal, is where there's a lot of moose, a lot of mating of moose, a lot of -- just a lot of wildlife that flows back and forth from that east -- or that north to the south side of the trail. And the whole park is just precious. There are so many parts of it. There's the Spruce Park, the Bog Park, the lake. And complete unit, it's just -- it's just a wonderful, wonderful complete place. To bring in more noise, more pollutants to lose that habitat in our city, in the middle of our city, with already as losing so much habitat, is tough, tough. So, yeah. So, I just wanted to make those comments. I wanted people to know about that, how I feel. And thank you. Thank you for the meeting and thank you for answering all my questions.